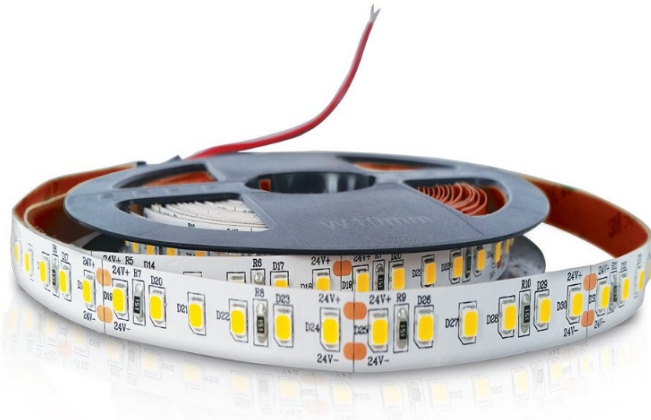


Product Specifications



IP20 Strip light for the professional Installer with 600 LED SMD 2835 chips per roll, anti-UV, long lifespan(35,000hrs); High Performance / Low Energy Chips, 24 Volts, Cuttable every 2 inches.

Wattage: 3.05 W/ft.

Electrical: 120 ~ 277Vac, 50/60Hz Driver.

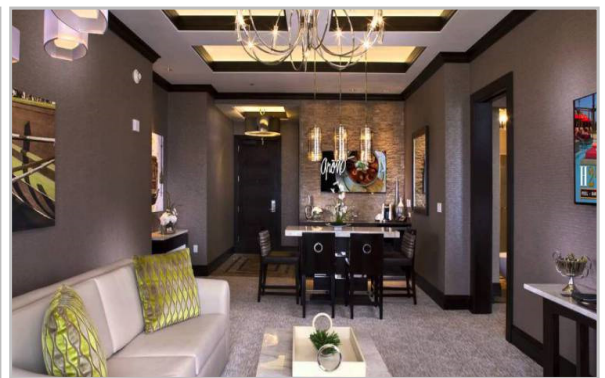
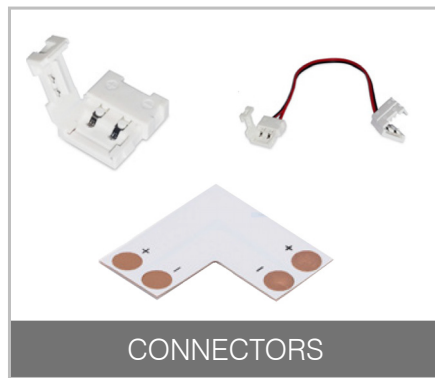
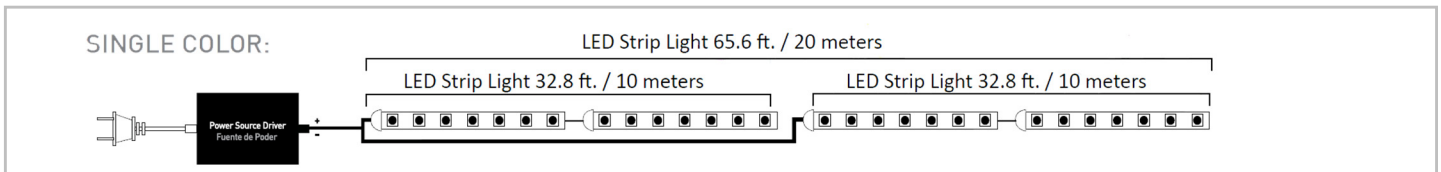
Power factor: ≥90%

Led efficiency: 350 lm/ft.

Color temperature: 3000K, 5000K

Color Rendering Index (CRI): ≥ 95

IP: 20



Ordering information

Ordering Example: ILST-24V-1

Series	Wattage	Size	Color Temp
ILST-24V	10 W/m 3.05 W/ft.	5 m/Roll 16.4 ft./Roll	1 = 3000K 2 = 5000K