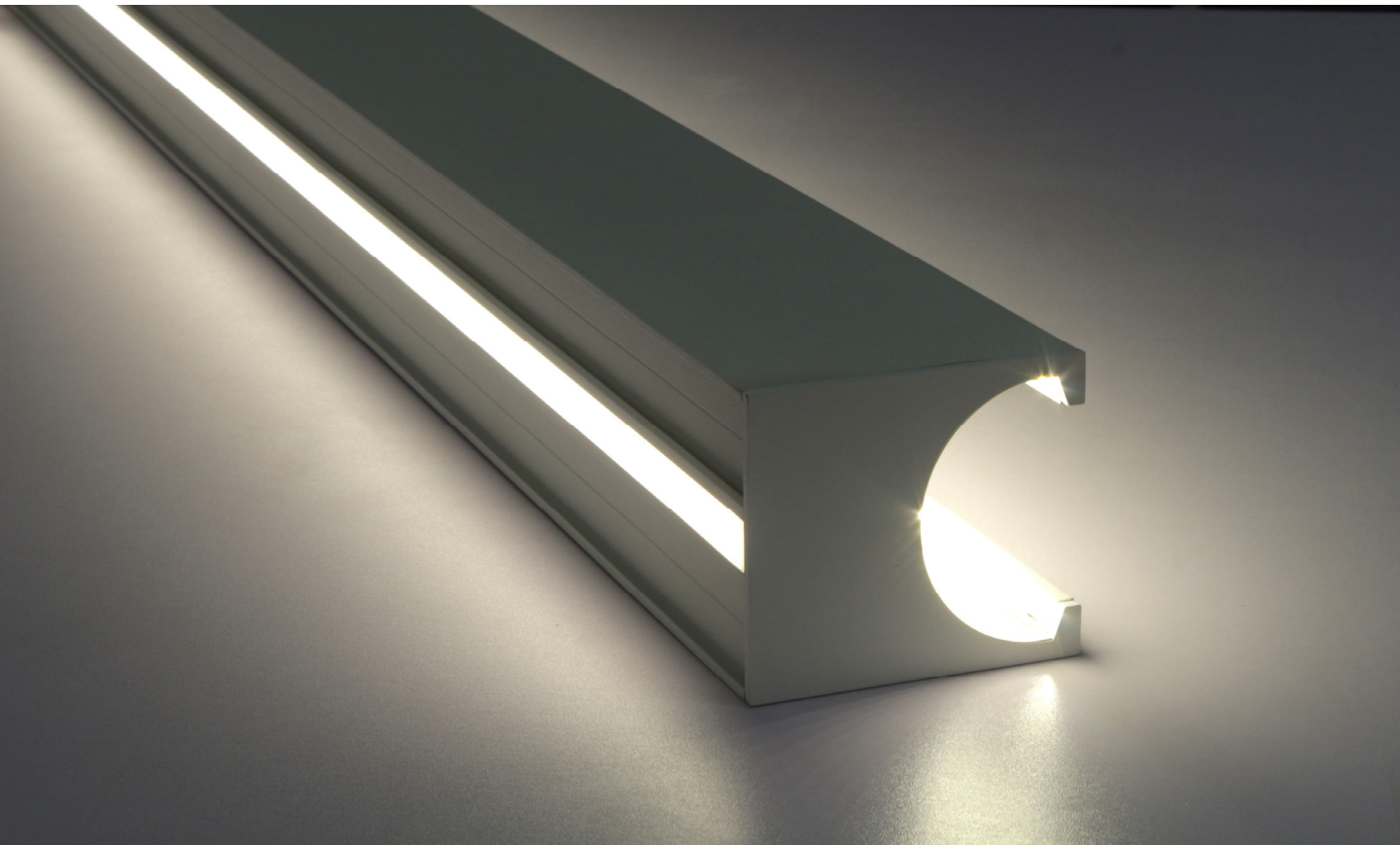


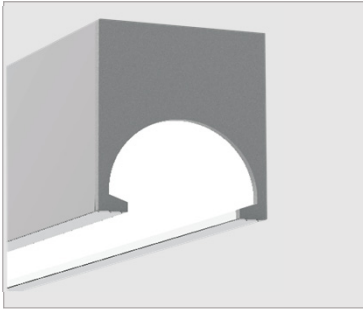
Liscio 2 - Direct / Indirect

Direct / Indirect Version

Architectural Linear LED Fixture



IL-L88299S



DESCRIPTION :

The *Liscio 2* linear direct / indirect light series is based on concise style and user experience improvement.

Various concise yet fashionable designs can be accomplished quickly through the creative ideas of space lighting designs and free design styles while emphasizing "QUICK" installation. *Liscio 2* permits the designer to create much better lighting effects than traditional lighting fixtures by revealing the beauty of linear light.

FEATURES :

- Aluminum 6063, good heat radiation with long lifespan;
- Support 0-1 0V, PWM and Resistor dimming solution;
- High lighting efficiency, save energy;
- Long lifespan, ≥ 50000 hours;
- Light source adopts LM-80 certified LED;
- Adopt UL Class P certified power supply

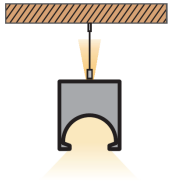
Product	IL-L88299S
Cover	Plain diffusion mask (Top)
Length	1232mm (4ft)
Installation	Pendant mounted
Profile Color	Silver/White/Black
CCT (K)	3000K, 3500K, 4000K, 5000K, 6000K \pm 300
Lumen (lm)	1400 lm (4ft), 2850 lm (8ft)
Beam Angle (°)	120° (Down)
CRI (Ra)	≥ 80
Lumen/feet (lm/w)	4200-4455lm (1050-1114lm/ft)
Lumen/feet (lm/w) (UP)	1027-1089lm (257-272lm/ft)
Lumen/feet (lm/w) (DOWN)	3173-3366lm (793-842lm/ft)
Voltage (V)	AC100-277V 50/60Hz
Dimming range	1-100%
Watt (w)	total: 45W(11.3W/ft) , up: 11W(2.8W/ft), down : 34W(8.5W/ft)
Using Ambient Temp	Tamin=-20°C,Tamax=45°C
Protection	IP40

Liscio 2

Direct / Indirect Linear LED Light

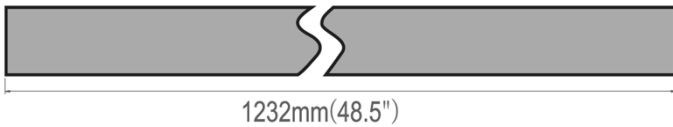
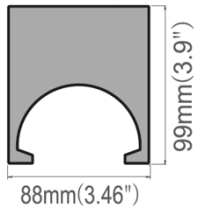


MOUNTING OPTIONS:

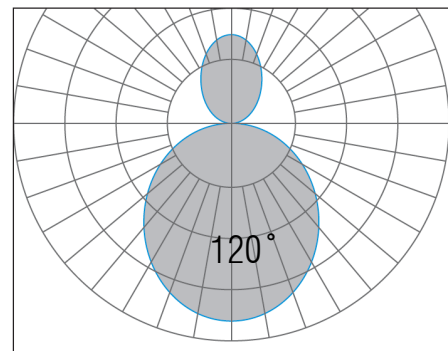


PENDANT

DIMENSIONS:



COLOR OPTIONS:



PENDANT ACCESSORIES



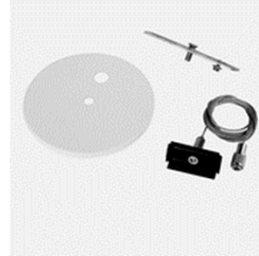
Pendant wire
L-PT



Pendant wire with canopy
L-PTB



Pendant wire with canopy
L-PTB-NPF



Pendant wire with canopy
L-PTB-PF

Ordering information:

IL-L88299S-1-1-1-1-0-1-1

Series	Mounting	Wattage (Length)	CCT (K)	Voltage	Battery & Emergency Back-Up	Accessories	Finish
IL-L88299S	1 = Pendant	1 = 45W (4ft)	1 = 3000K 2 = 3500K 3 = 4000K 4 = 5000K 5 = 6000K	1 = 120V 2 = 277V	0 = None 1 = 60 Mins 2 = 90 Mins	1 = L-PT 2 = L-PTB 3 = L-PTB-NPF 4 = L-PTB-PF	1 = Silver 2 = White 3 = Black